

CE-Spaces4All: Improving Accessibility of Tourism for Persons with Disabilities in Central Europe

Interreg
CENTRAL EUROPE



Co-funded by
the European Union

CE-Spaces4All

REAL CORP 2024

Mannheim, April 16th 2024

Blaž BARBORIČ*, Maja Baloh*, Marina Lovrić*

Manfred SCHRENK**, Tatjana FISCER**, Clemens BEYER**

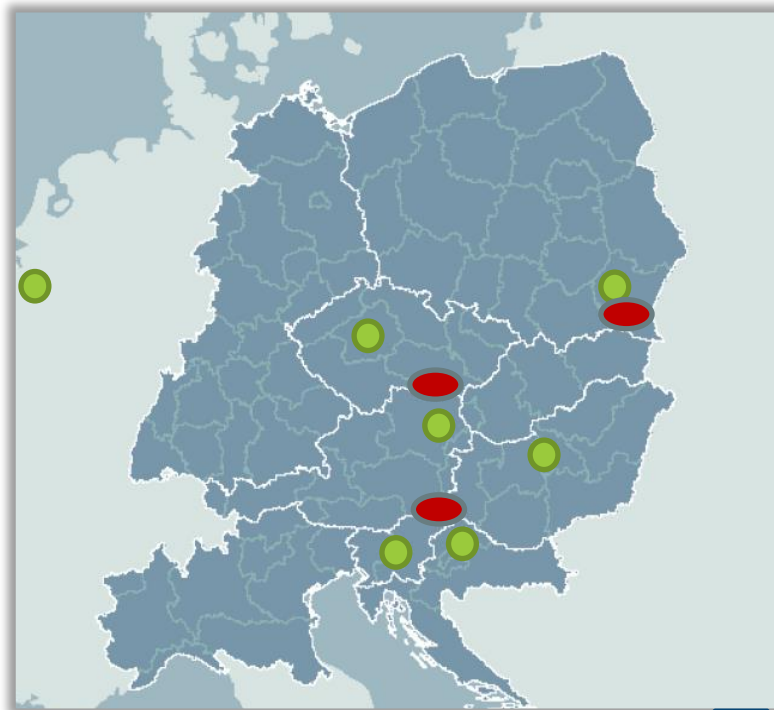
* Geodetic Institute of Slovenia; Ljubljana, Slovenia

** BOKU, Inst. of Spatial Planning; Vienna, AT

Accessible Spaces For All

Ce-spaces4all Project Identification

- 12 partners
- 16 associated partners
- 6 CE countries and 1 EU organisation
- 03. 2023 - 02. 2026
- 3 pilot regions
- www.interreg-central.eu/projects/CE-Spaces4Aall



Accessible Spaces For All

CONTENT:

- Project objectives
- Data collection process
- Data collecting
- WEB ACCESSIBILITY VIEWER
- Developing tools and services
- Capacity building, policy uptake and mainstreaming events

Project objectives

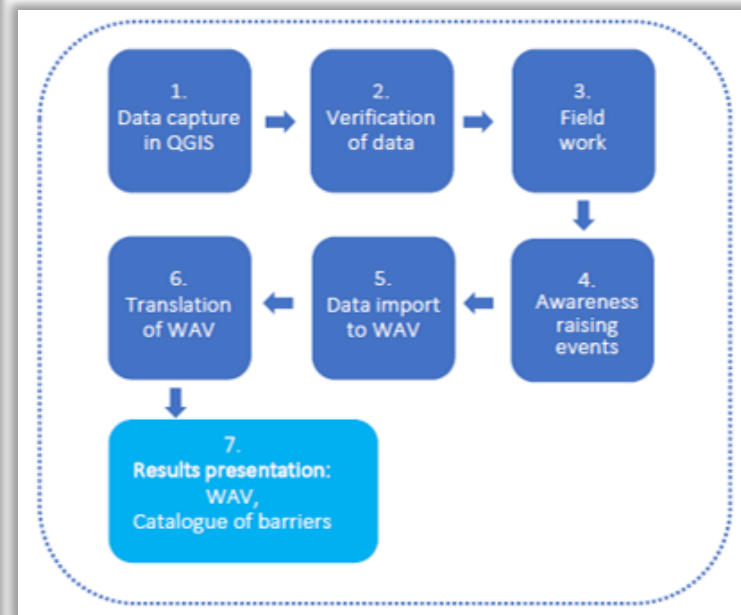
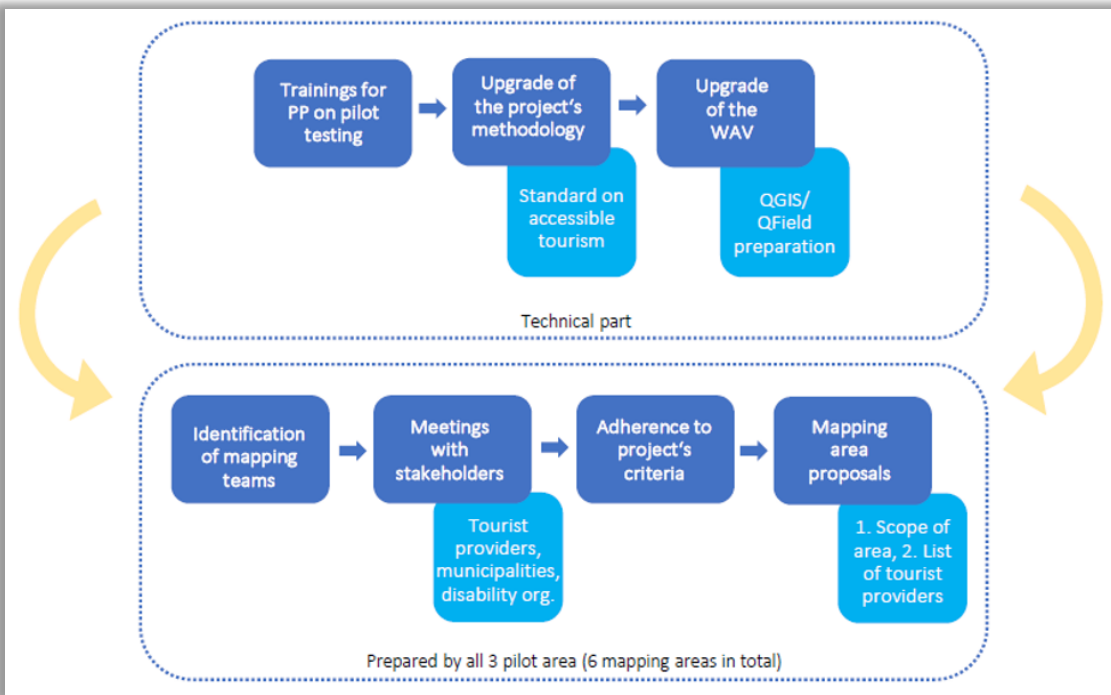
**IMRPOVE GOVERNANCE
AWARENESS-RAISING
CAPACITY BUILDING ON ACCESSIBILITY FOR PWD
CHANGE OF BEHAVIOUR**

**Developing a joint tool for evidence-based territorial planning
Developing tools and services for independent tourism travel of PWD
Mainstreaming and policy uptake**

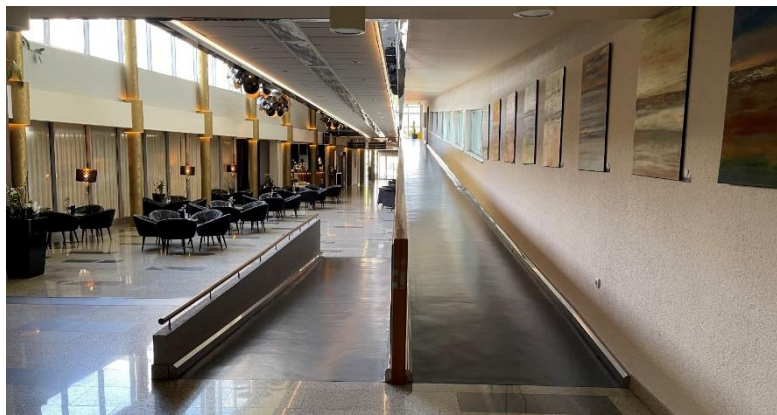
Data collection process to improve accessibility for persons with disabilities

- **data collection process** for collecting information about accessibility for **persons with disabilities** in the **context of tourism**.
- The collected data will provide **valuable information** to assist **persons with disabilities** in making informed decisions about their **travel plans**, ensuring that their **specific needs are met**.

Preparation for data collecting process



MEETINGS WITH TOURIST PROVIDERS

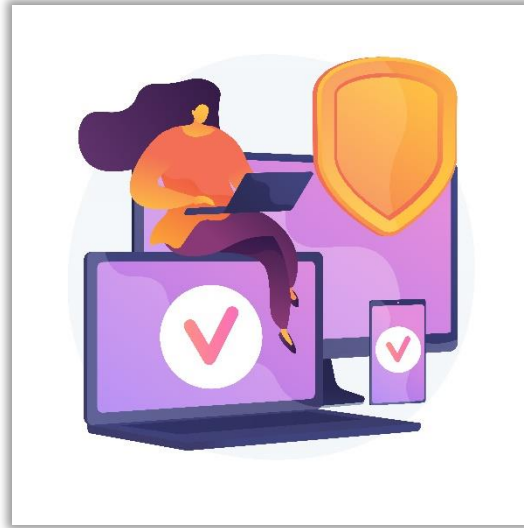


Phases of data collecting

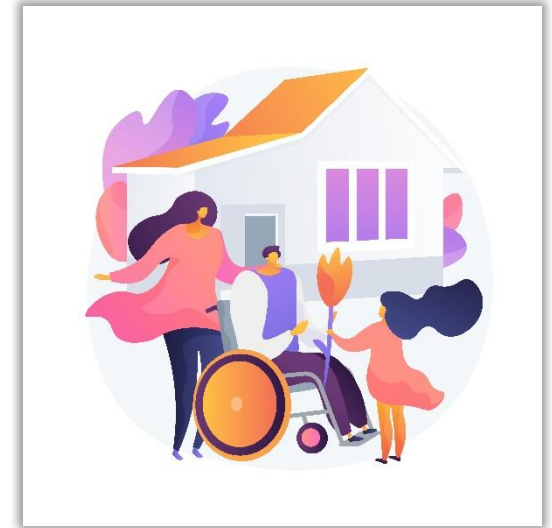
The data collecting process for this project is divided into **3 distinct phases**



Office data collecting



Verification of data

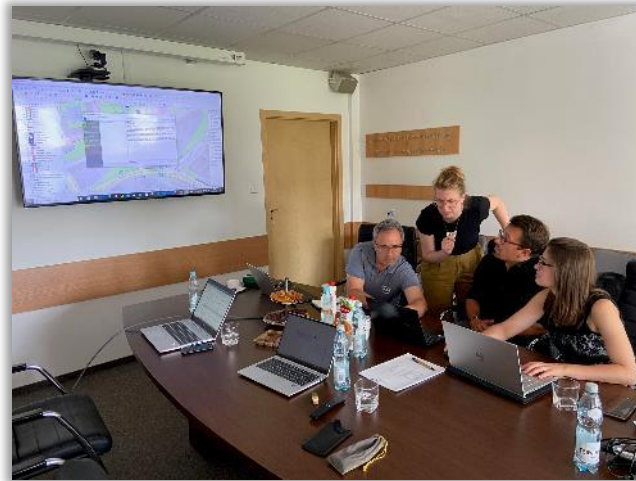


Field data collecting

Data collection process - use of spatial data

The data collecting process begins with the acquisition and integration of open spatial data resources.

1. QGIS
2. QField for QGIS
3. ESRI basemaps
4. Open Street Map
5. Google Street View



All photos: Geodetic institute of Slovenia

Data collection process - inclusive approach - accessible places for all

The data collection process will focus on capturing information that is relevant to persons with:

Persons with mobility impairments

Blind people and persons with visual impairments

Deaf people and persons with hearing impairment

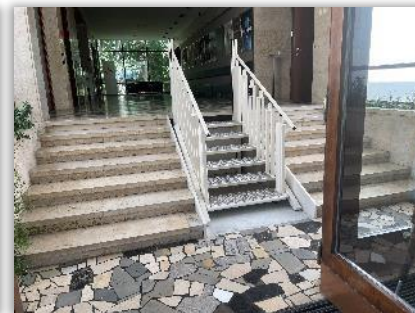
Standardised accessibility criteria and guidelines are used to evaluate and record the accessibility status of pathways, transportation facilities, public buildings, and other relevant amenities.



Inclusive approach - accessible places for all

- **inclusive design** - spaces and products are accessible to the widest range of individuals and that the **persons with disabilities** are involved in the process (eg. Planning, data collecting, writing of methodology)- a more inclusive and equal society
- It benefits one target groups and does not harm others (eg.TWSI, audible pedestrian semaphore, slopes, etc.)
- Data in Slovenia were collected for all 3 vulnerable groups, planned for 5 vulnerable groups
- Identified categories that are key to improve accessibility and the development of tourism products:

- unknown accessibility
- ✓ fully wheelchair accessible
- ! partially wheelchair accessible
- ✗ not wheelchair accessible



All photos: Geodetic institute of Slovenia

Data collection - rules and guidelines

The methodology specifically refers to the rules and guidelines outlined in the:

- **ISO standard 21542:2021 Building construction – Accessibility and usability of the built environment.**
- **ISO standard 21902:2021 Tourism and related services - Accessible tourism for all - Requirements and recommendations**

It provides **criteria for evaluating** the accessibility and usability of different elements within the built environment, facilitating the identification of potential barriers and opportunities for improvement in urban and natural / rural area.

Data collecting

Urban area:



Key:

1 Barriers

4 Public transport stations

7 Tactile walking surface indicators

2 Paths

5 Parking place

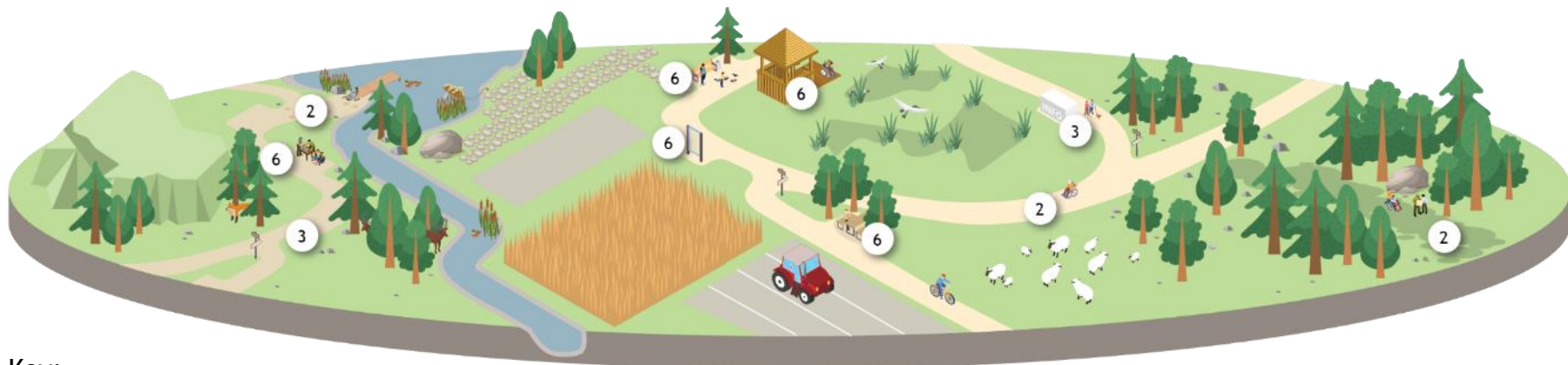
8 Audible pedestrian semaphore

3 Tourism facilities

6 Points of interest

Data collecting

Natural or rural area:



Key:

1 Barriers

2 Paths

3 Tourism facilities

4 Public transport stations

5 Parking place

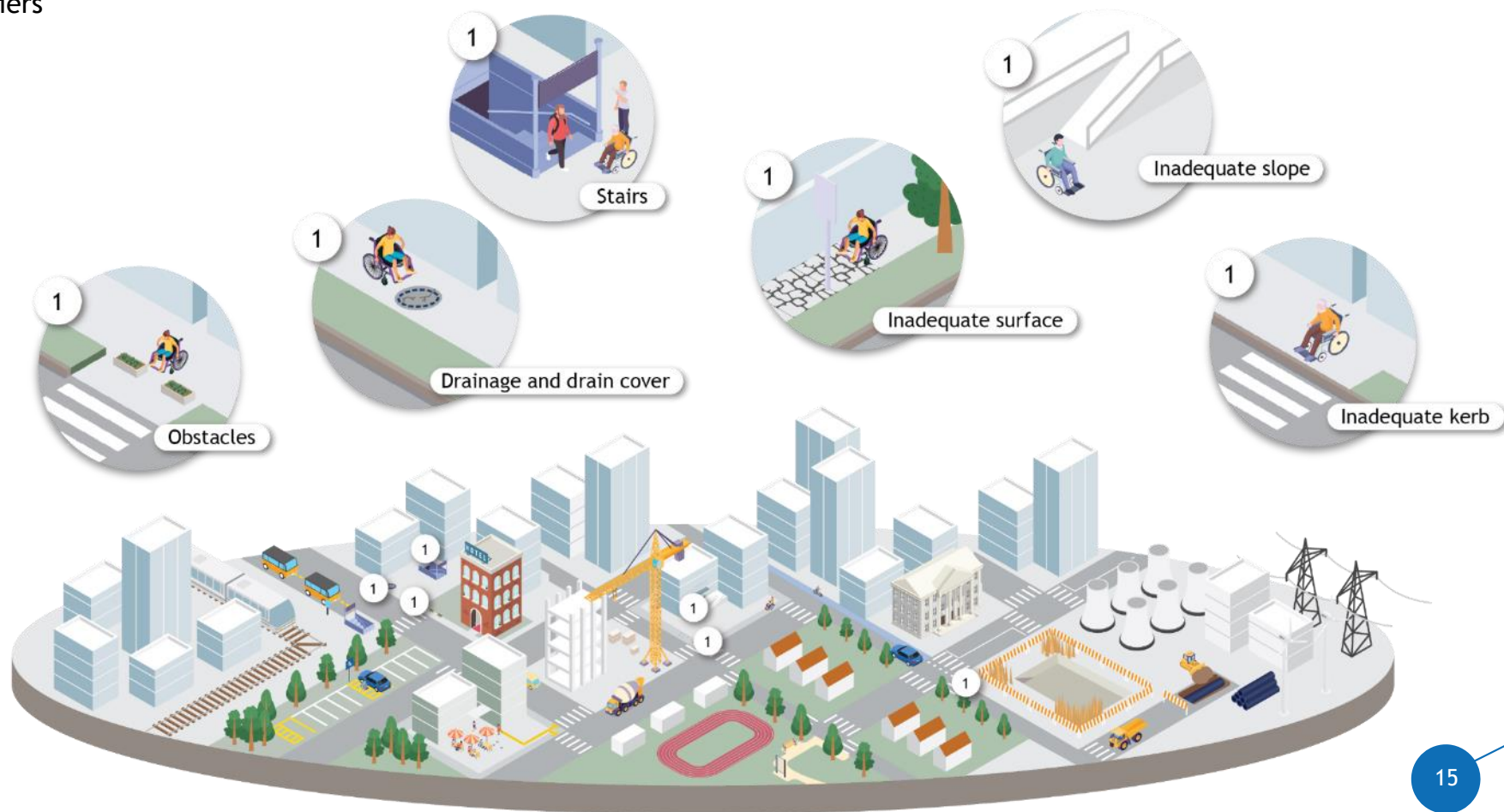
6 Points of interest

7 Tactile walking surface indicators

8 Audible pedestrian semaphore

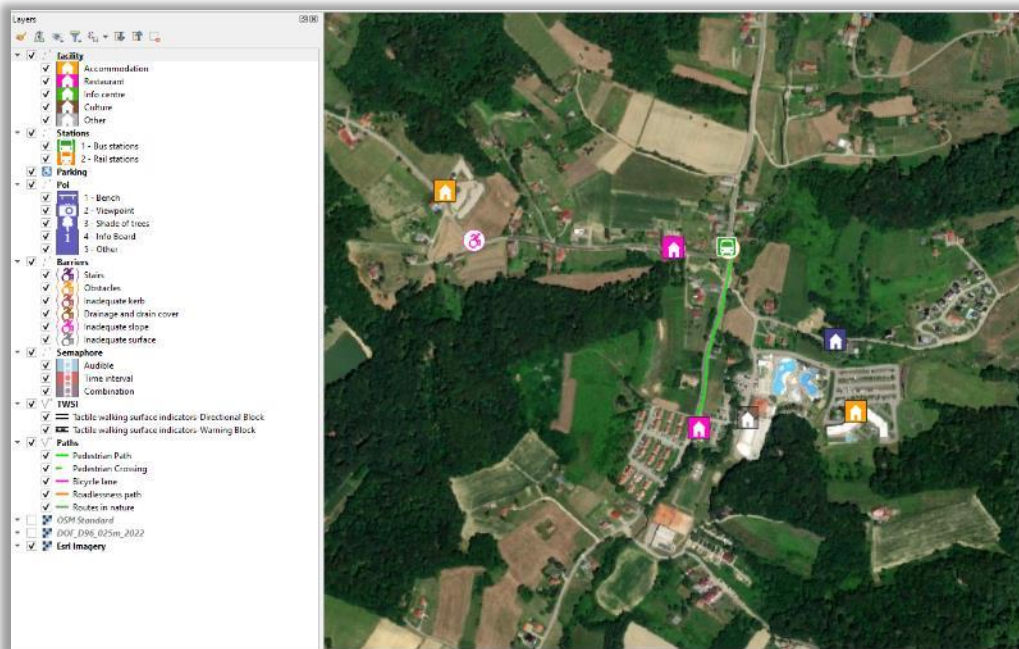
Key:

1 Barriers

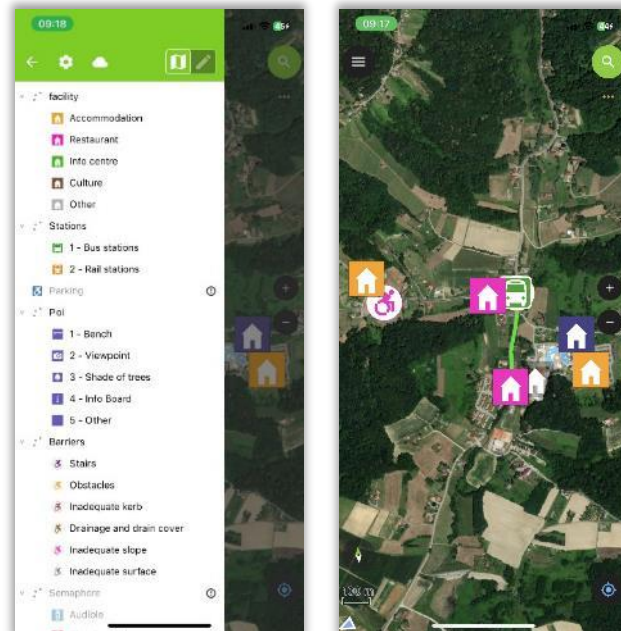


Data collecting

Data capture in QGIS

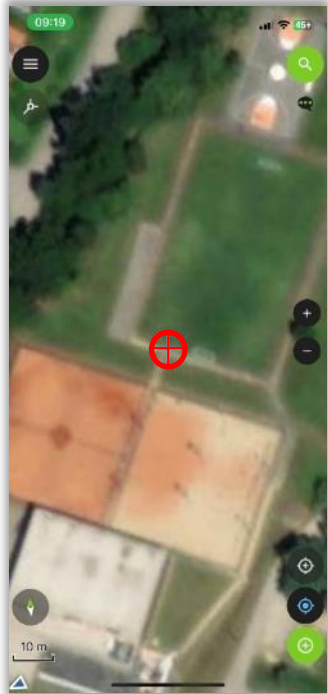


Data capture and verification on the field with QField



Data collecting with mobile devices and verification on the field with Qfield

Adding point data

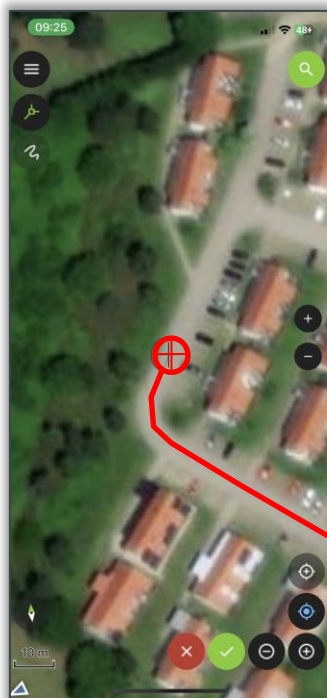


Editing attributes

A screenshot of the Qfield application's 'Add feature on facility' form. The form has a green header with a checkmark and a trash icon. Below the header is a text input field. A dropdown menu is open, showing the following options: '1 - Accommodation', '2 - Restaurant', '3 - Info centre', '4 - Culture', and '3 - Other'. Each option has a checkbox to its right. At the bottom of the form, there is an 'Info_br' field with a dropdown arrow.A screenshot of the Qfield application's 'Add feature on facility' form, showing the attribute editing section. The form has a green header with a checkmark and a trash icon. Below the header is a dropdown menu. The 'Acc_bal' field is a dropdown menu. The 'Note' field is a text input field with a vertical ellipsis icon to its right. The 'Photo' field is a text input field with camera and gallery icons to its right. The 'Date' field is a text input field containing '11/09/2023' with a close (X) icon and a calendar icon to its right. Each field has a checkbox to its right.

Data collecting with mobile devices and verification on the field with Qfield

Adding line data



Editing attributes

✓ Add feature on Paths

Path_type

- 1 - Pedestrian Path
- 2 - Pedestrian Crossing
- 3 - Bicycle lane
- 4 - Roadlessness path
- 5 - Routes in nature

✓ Add feature on facility

Acc_bal

Note

Photo

Date

WEB ACCESSIBILITY VIEWER - <https://spaces4all.gis.si/>

To be used:

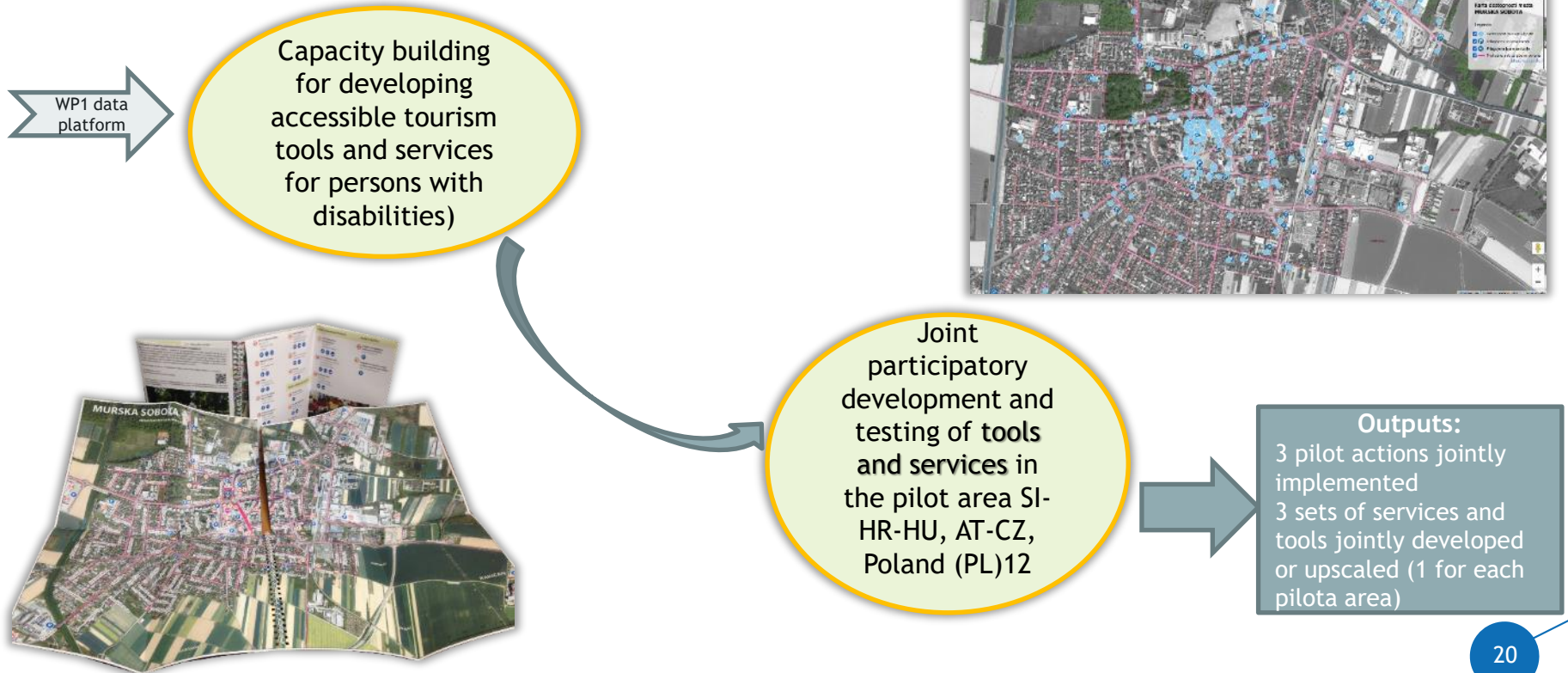
- by policy makers, to improve spatial management
- the tourism sector to review accessible tourism sites, facilities for PWD and barriers in the pilot areas

The screenshot displays the 'Web Accessibility Viewer' interface. At the top left, it features the 'interreg CENTRAL EUROPE' logo and 'Co-funded by the European Union' text. Below this is a 'CE-Spaces4All' banner. The left sidebar contains a 'Layers' section with various accessibility categories and their counts, and a 'Selected content' section with icons for different types of users. The main map area shows a street map with several accessibility points marked. A popup window is open over a point, displaying the following information:

Ime	Hotel Terme Sveti Martin
Naslov	Izvorska 3, 40313 Sveti Martin na Muri, Croatia
Vrsta	Naslanitev
Datum	10. 08. 2023
Dostopen vhod	Da
Dostop z invalidskim	

The popup also includes a 'Fotografija' section with a small image of the hotel's interior.

Developing tools and services for independent tourism travel of persons with disabilities



Capacity building, policy uptake and mainstreaming events

Joint strategy for improving territorial planning for accessible tourism in Central Europe

Participatory development of action plans for improving the accessibility of tourism in the 3 project pilot tourism areas

Mainstreaming on regional/national/EU level

Outputs:
3 pilot actions jointly implemented
3 action plans for accessible tourism

Programme result indicator:
1. Participatory co-design and capacity building process to develop main outputs
2. A Joint Strategy
3. Organisations cooperating across borders after project completion



Photo: edf-feph.org



Photo: pexels.com/free to use

Thank you for
your attention!

Time for Q&A

