

BROWNFIELDS INFORMATION BROCKER

Karel Charvat, Help Service Reote Sensing
Sarmite Barvika, Riga Technical University
Tomas Mildorf, University of West Bohemia

REAL CORP 2016

June, 22-24, 2016, Hamburg, Germany

Key Points

Business need to promote revitalization of brownfields and to develop a virtual place for brownfields integration in the Europe:

- To identify;
- To collect;
- To advertise;
- To share;
- To harvest;
- To reuse.

The Novelty

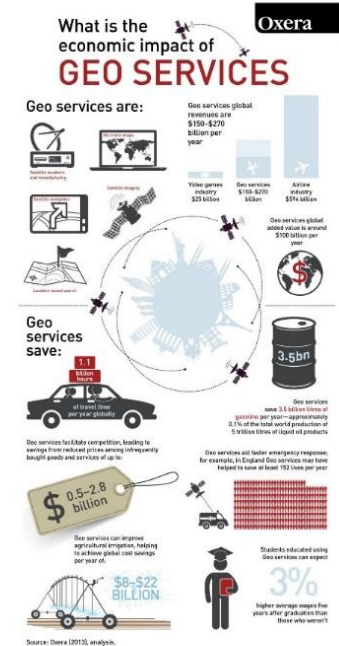
- The proposal to develop cross-border brownfields data integrator (brownfields broker);
- Use a machine readable format, which meets requirements of INSPIRE directive;
- Provision of new services for broad spectrum of clients (governments, citizens, property owners, entrepreneurship, research).

The Market

The Oxera Study estimates that the geo services sector has a global GVA of 84,63 billion EUR.

Key user groups for **Brownfield4LIFE** are

- Investors & developers
- Banks
- Real estate agencies
- Local governments (municipalities, regions)
- Citizens

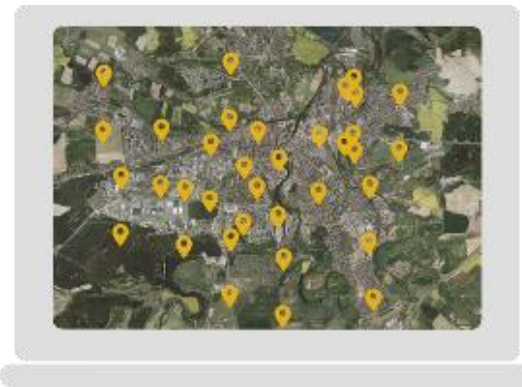


Challenge for Brownfields



Solution

- ▶ The aim is to develop a broker for brownfields and abandoned urban spaces. The broker will provide services for automated data harvesting from various sources, data collection using mobile phones and mechanisms for data analysis and access through APIs and other machine to machine interfaces.



COLLECT



DATA



ANALYSE

Product & FIWARE Relevance

Delivery ecosystem

Wirecloud

Security

Access
Control

Identity
Management

User interfaces

Real Virtual
Interaction

3D-UI-XML3D

CoNWeT
wms-viewer

3DUI –
WebTundra

POI
Data
Provider

Interface
Designer

Middleware

Stream-
oriented –
Kurento

GIS Data
Provider -
Geoserver/3D

Databases

PostgreSQL, NoSQL, DRF -
Virtuoso

Competition & Current Situation

There are several activities (solutions), but they has:

- incomplete data,
- lack of cross-border coverage,
- poor visualization,
- no data sharing,
- Lack of tools for online analysis.

Many activities play a role from out-of Europe (e.g. from North America)

Example of a competitor CzechInvest

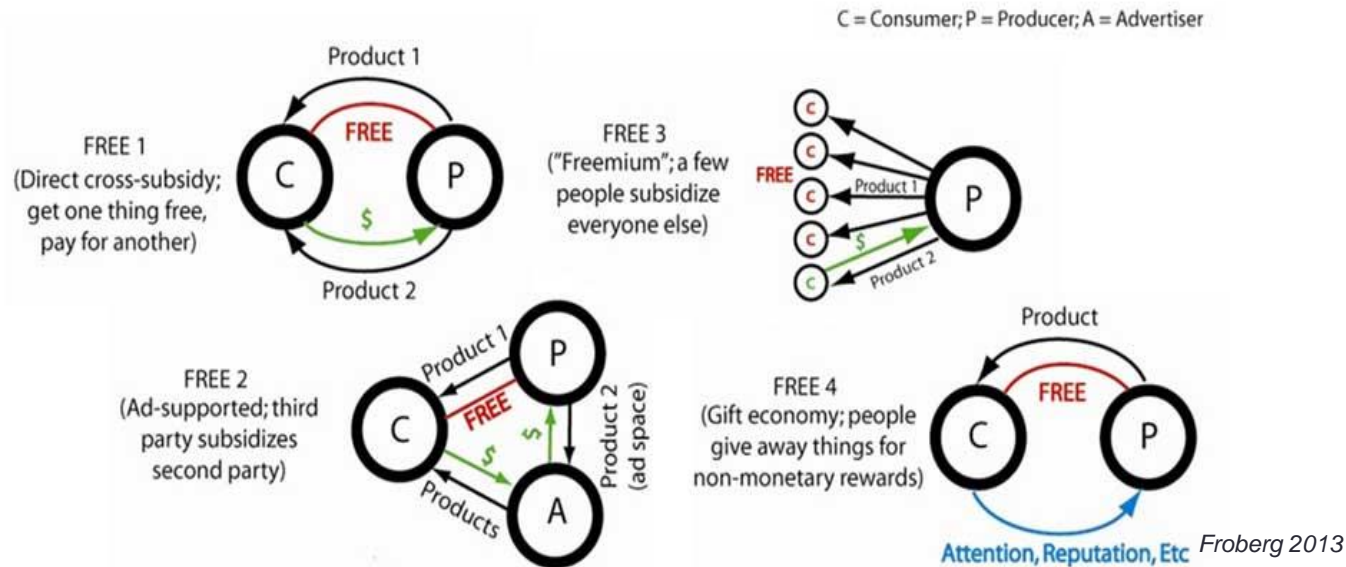
The screenshot displays the 'National Database of Brownfields' website. At the top, there is a navigation bar with 'Homepage', 'List of brownfields', 'Information on the project', and 'Contacts'. Below the navigation bar is a search interface with a 'Fulltext' search bar and a 'Keyword' field. The search results are filtered by 'Locality' and 'Region'. The 'Region' filter is expanded, showing a list of regions with checkboxes: Capital City Prague, Central Bohemian region, Hradec Králové region, Karlovy Vary region, Liberec region, North Moravian region, Olomouck region, Pardubice region, Plzeň region, South Bohemian region, South Moravian region, Ústí nad Labem region, Vysočina region, and Zlín region. The 'District' filter is set to 'N/A', 'Type of site' is 'N/A', and 'Previous use of the site' is 'N/A'. The 'Size of site' filter is set to 'From' and 'To' in m². The search results are displayed in a table with columns for 'Municipality', 'Type of site', 'Previous use of the site', and 'Size of site'. The results include:

Municipality	Type of site	Previous use of the site	Size of site
Hrdlově	Structure (low building)	Industry	7860 m²
Hrdlově	Structure (low building)	Other	1464 m²
Kozlově	Structure (low building)	Industry	1679 m²
Stříteňka	Complex (land with buildings)	Industry	71500 m²
Žatec	Complex (land with buildings)	Industry	8392 m²

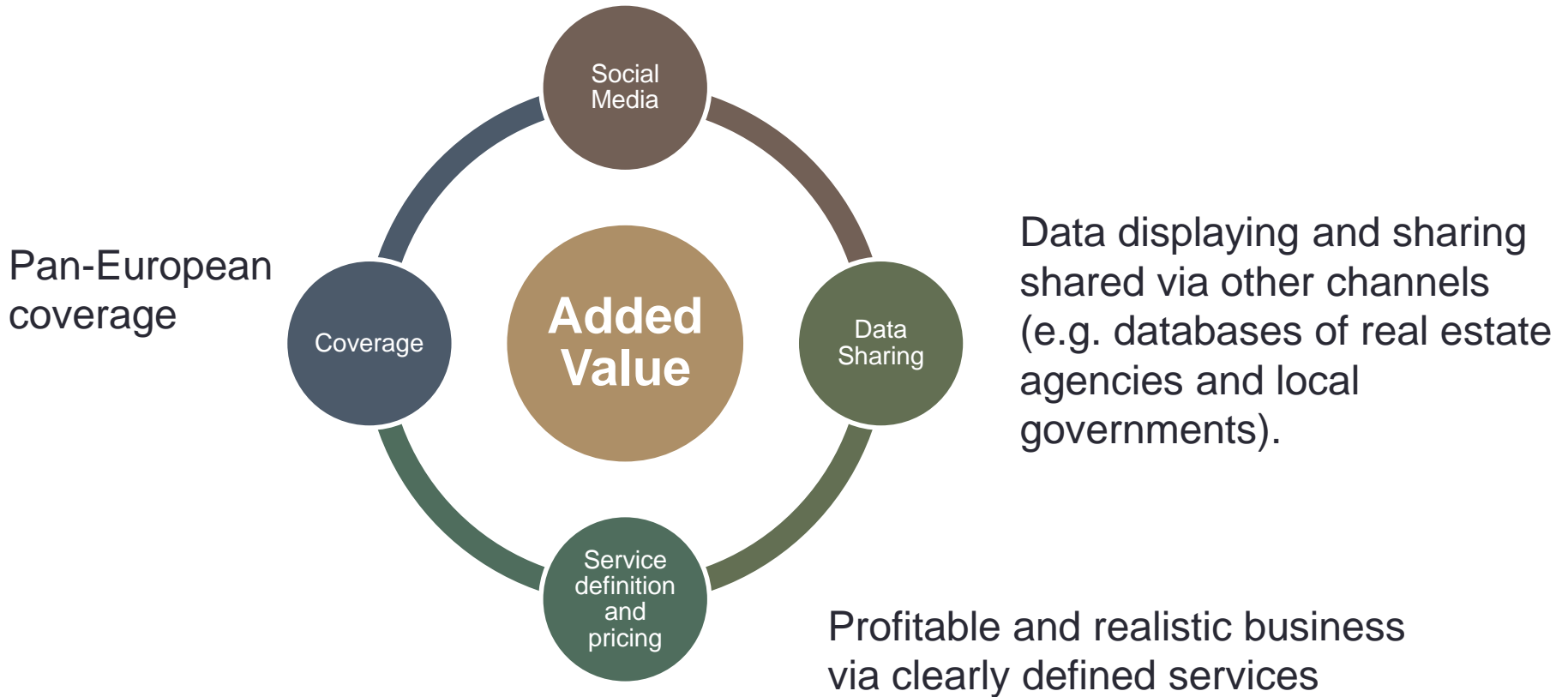
Offered Business Model

Based on «a freemium business model»:

- some services are given for free
- more complex and on demand services) will be paid.



Networking:
Platform (website), LinkedIn,
Facebook, Blogs, webinars,
workshops, conferences, etc.



Thank You for Attention!



REAL CORP 2016